

# QuickCopy & QuickCopy PC Software

Interactive operating instructions



# WELCOME PAGE

---

The QuickCopy device enables the quick copying of settings of a Chronis / Soliris Smoove or Smoove UNO io device to other Chronis / Soliris Smoove & Smoove UNO io controllers. QuickCopy is operated over the plugged in Chronis / Soliris Smoove & Smoove UNO io device (see chapter "*Soft Key functions of the Smoove device*").

The QuickCopy device runs on batteries and can also be supplied over the USB interface of the computer.

## **This manual is interactive:**

- Click on each title or page number in the table of Contents to access it directly.
- Click on [\[ Back to Contents \]](#) at the bottom of each page to return to table of Contents.

# CONTENTS

---

*[ Interactive instructions ]*

*You can click on each title to access it directly.*

---

|  |    |
|--|----|
| 1. DESCRIPTION                             | 4  |
| 2. STARTING UP THE QUICKCOPY DEVICE        | 5  |
| 3. SOFT KEY FUNCTIONS OF THE SMOOVE DEVICE | 6  |
| 4. COPY FUNCTION OF THE QUICKCOPY DEVICE   | 7  |
| 4.1. Copy Smoove device to QuickCopy       | 8  |
| 4.2. Copy QuickCopy to device              | 9  |
| 4.3. Configure                             | 10 |
| 4.4. Reset / Delete storage location       | 10 |
| 5. QUICKCOPY PC SOFTWARE                   | 11 |
| 5.1. Starting-up the QuickCopy PC Software | 11 |
| 5.2. Copy function of the software         | 14 |
| 5.3. Parameter settings                    | 15 |
| 6. TECHNICAL DATA                          | 17 |

---

# 1. DESCRIPTION

---

**USB CABLE TO PC CONNECTION**

**ON BUTTON WITH BATTERY OPERATION**

**LEDS**

Show move direction with manual operation

**SYNC LEDS**

Display of communication from device to QuickCopy or from QuickCopy to device

**RESET BUTTON**



There is a QuickCopy PC Software written for the QuickCopy. It is a user-friendly software which enables copying of device settings to additional devices (as with the QuickCopy device), as well as parameter settings of the Chronis / Soliris Smoove & Smoove UNO io device.

## 2. STARTING UP THE QUICKCOPY DEVICE

---

1. Unscrew the 4 screws and open the device.
2. Place the batteries in the QuickCopy device and screw the device closed.
3. Plug the Chronis / Soliris Smoove or Smoove UNO io device to the QuickCopy device.
4. Press the ON button of the QuickCopy device to supply the Chronis / Soliris Smoove or Smoove UNO io device with power.
  - > "Somfy", followed by "Operating menu", are briefly displayed.

**Note:** After approx. 3 minutes with no operation of the device, the power supply is switched off automatically.

Unplug the Smoove device as soon as the Copy procedure is completed.



### 3. SOFT KEY FUNCTIONS OF THE SMOOVE DEVICE

---

The soft key functions of the plugged in Chronis / Soliris Smoove device are similar to that of normal operation:

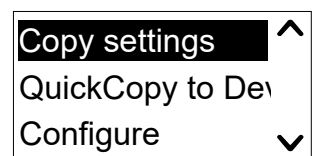
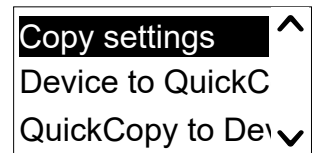


## 4. COPY FUNCTION OF THE QUICKCOPY DEVICE

---

On the main display of the Smoove device, "Copy settings" appears with the following options:

- Device to QuickCopy: the settings from plugged-in Smoove device are copied to the QuickCopy storage (see chapter "[Copy Smoove device to QuickCopy](#)").
- QuickCopy to device: the other way around, the settings from a QuickCopy storage are copied to the plugged-in Smoove device (see chapter "[Copy QuickCopy to device](#)").
- Configure: exit the copy function. QuickCopy is used as a power supply for the device (see chapter "[Configure](#)").



## 4. COPY FUNCTION OF THE QUICKCOPY DEVICE

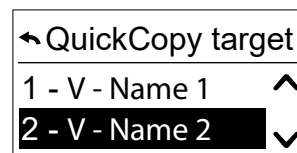
---

### 4.1. Copy Smoove device to QuickCopy

#### Copy settings

1. Confirm "Device to QuickCopy".

- > In the menu point "QuickCopy Target", there are 10 different storage destinations available (Name 1 to Name 10).



**Note:** The naming of storage destinations 1 to 10 is fixed and cannot be modified with the QuickCopy device. For this reason, the storage destinations are to be documented separately.

The status of the storage destinations is shown with a symbol:

- X = the space is empty
- V = the space is occupied

2. Scroll for storage destination and save your selection.

- > The synch LED on the QuickCopy device lights up briefly in green and the following message appears: "Sending configuration to the QuickCopy tool".

**Note:** If the storage destination is already occupied, the following message appears: "Already stored data will be overwritten". Either confirm this option or exit.

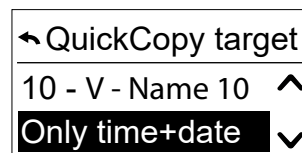
#### Copy only Time and Date

In the factory state, the storage in the QuickCopy device is empty and with no time and date settings. Here, you have the option of copying only from the plugged-in Smoove device to the QuickCopy device. When the QuickCopy device is run on batteries, the time and date remain during the period with battery operation. However, after changing the batteries, the time and date must be copied / set again.

1. Following storage destination number 10, confirm the option "Only time+date".

- > The following message appears: "Sending time/date to the QuickCopy tool".

2. Remove the Smoove device after completion of the copy procedure.





## 4. COPY FUNCTION OF THE QUICKCOPY DEVICE

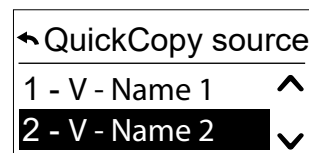
---

### 4.2. Copy QuickCopy to device

#### Copy settings

1. Confirm "QuickCopy to device".

> In the menu point "QuickCopy source", there are 10 different storage destinations available (Name 1 to Name 10).



The status of the storage is displayed with a symbol:

- X = the space is empty
- V = the space is occupied

2. Scroll for storage destination and save your selection.

> The Sync LED lights up briefly in green and the following message appears: "Getting configuration from the QuickCopy tool".

**Note:** Should the end products be different, the correct move time must be entered again. If the length of the end products is identical with the stored configuration, you can take on the value listed and simply confirm.

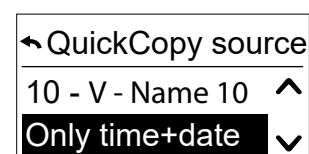
#### Copy only Time and Date

When the Smoove device has not been supplied with electrical power for several hours, it loses the time and date. For this reason, it is possible to copy only time and date from the QuickCopy device.

1. Following storage destination number 10, choose the option "Only time+date".

2. Confirm this option.

> The following message appears: "Getting time/date from QuickCopy tool".



## 4. COPY FUNCTION OF THE QUICKCOPY DEVICE

---

### 4.3. Configure

You exit the copy function and the plugged in device functions as in the built-in condition. The QuickCopy device now only supplies power.

Carry out the settings comfortably.

**Note:** To return to the copy function, the Smoove device must be unplugged and subsequently plugged in again to the QuickCopy device.

### 4.4. Reset / Delete storage location

In case the complete QuickCopy storage were deleted, press the Reset button for at least 10 seconds.

To show confirmation, both synch LEDs light up briefly.

## 5. QUICKCOPY PC SOFTWARE

---

The software serves as a user-friendly support for setting and copying the device parameters. Configurations can be prepared on the PC and then transferred later to the QuickCopy device, to Chronis / Soliris Smoove or Smoove UNO io.

In addition, you have the possibility of reading out already programmed devices on the PC and, if necessary, to save the settings.

### 5.1. Starting-up the QuickCopy PC Software

#### Installing the software

System requirements: Windows 7, 8 or 10.

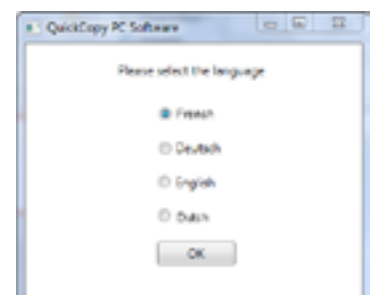
1. Copy the "QuickCopy PC Software" file on your computer after downloading it ([www.wiredcontrols.somfy.com](http://www.wiredcontrols.somfy.com)).
2. Extract the .zip data.
3. Start the .exe application.

> You will be requested by the system to confirm the trustworthiness of the software.

> At start-up, the following messages appear on your PC.



4. Select the language and press "OK".



> The following window appears.



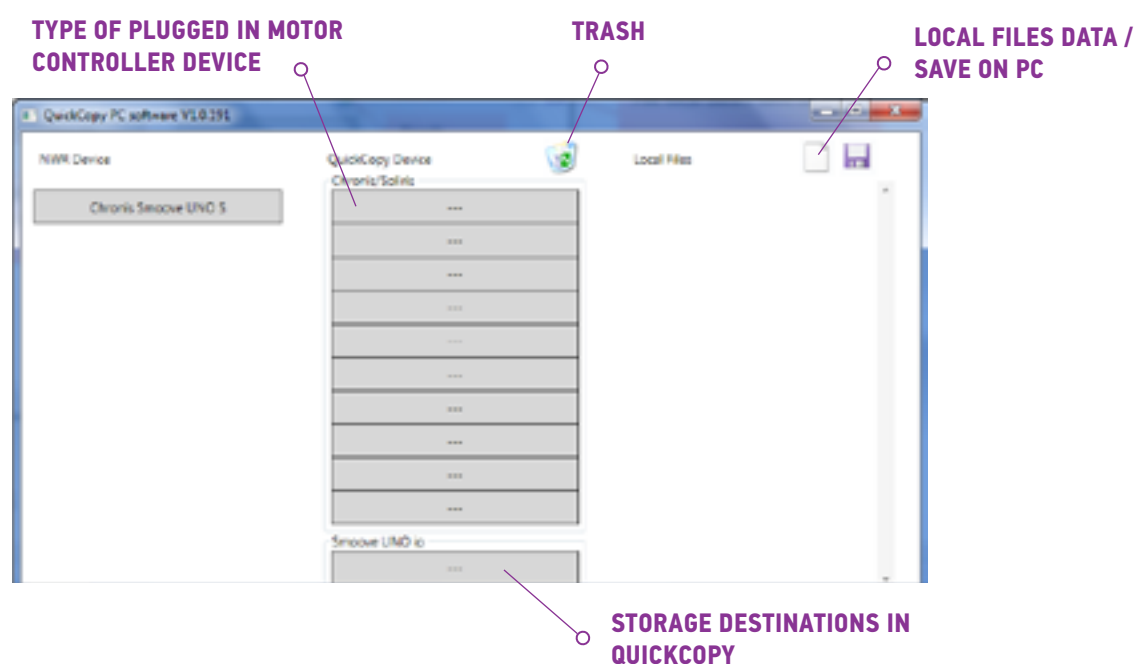
## 5. QUICKCOPY PC SOFTWARE

---

### Connecting the QuickCopy device

1. Connect the QuickCopy device to the PC via the supplied USB cable.
2. Plug the Chronis / Soliris Smoove or Smoove UNO io device to the QuickCopy device.
  - > The "Controlled by PC application" notification appears on the display of Chronis / Soliris Smoove.
  - > With Smoove UNO io, a red LED lights up.

### Description of the main overview



### Type of Device

When the Chronis / Soliris Smoove or Smoove UNO io device is plugged-in, the controlled device type is shown in the upper left area of the display (example: Chronis Smoove UNO S).

### Storage locations

The available storage locations of the QuickCopy device are displayed. There are 10 locations for Chronis / Soliris Smoove versions. For Smoove UNO io, there is a separate storage location.

### Checking availability of the storage location

In the factory state, the storage locations are not assigned with names and "---" is displayed. However, this does not mean that there are no storage locations with data already stored. For this reason, name the occupied storage locations (right mouse click). The name is then simultaneously transferred to the QuickCopy device.

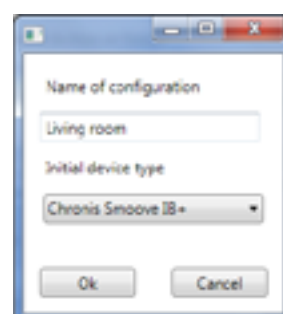
## 5. QUICKCOPY PC SOFTWARE

---

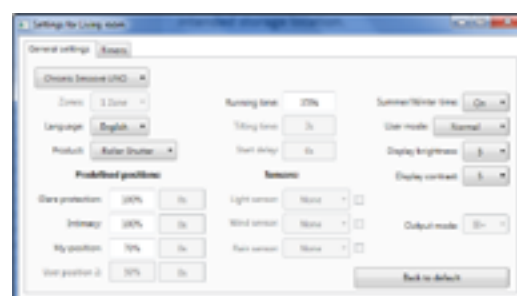
1. With the left mouse button, click on the storage location to enquire whether the space is occupied.
  - > If the following window appears, the storage location is free.



2. In the first field, you can give the storage location a name (e.g. living room).
3. In the second field, you select the corresponding product (e.g. Chronis Smooove IB+).



4. If the location is occupied, the following window appears, showing all configuration parameters for the intended storage location.



### Naming the storage location

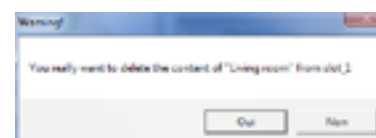
1. Right click on the storage location to name or rename it.
2. Enter the name.

We recommend always naming the occupied storage location.

- > When working with QuickCopy device without software, the name of the storage location will now appear.

### Deleting the storage location

- Drag and drop (press continuously the left mouse button) to move to the trash the storage location that you wish to delete.
  - > A warning appears to confirm deletion.



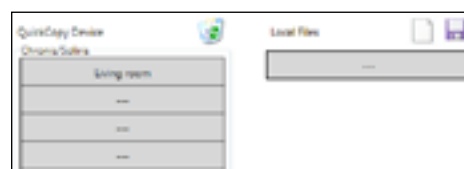
## 5. QUICKCOPY PC SOFTWARE

---

### Assigning additional storage locations in the PC

When the 10 storage locations are occupied and are insufficient, it is possible to assign additional storage locations in the PC. However, these are only saved locally in the PC as .xml files.

1. In "Local files", left click on the sheet symbol to assign a new file.
2. Click on the disk symbol to save the file.
  - > A confirmation of the saving process appears.



The data is saved in the "Database" sub-directory. This folder can be found at the same place where the .exe data is located. Up to 100 files can be stored directly in this directory. If you have more files, we recommend moving these to an additional directory, e.g. "Construction project". Doing this means that the data will not be displayed when the QuickCopy Software is started.

## 5.2. Copy function of the software

The settings of a device can be copied quickly and easily to another device. In the QuickCopy device, there are 10 storage locations available for Chronis / Soliris Smoove. For the Smoove UNO io, there is one location available.

### Copy procedure

The settings at a storage location, on the plugged-in device or data stored in a PC, can be copied easily to another position (device, QuickCopy storage location or PC file).

1. Move the mouse cursor on the copy field.
2. Click the left mouse button.
3. Keep the left mouse button pressed and move the mouse cursor to a new position.
  - > If this position already contains configuration data, you are asked whether you really wish to overwrite the current data.

**Note:** Pay special attention when you are trying to copy between different device types. After the copy procedure, we recommend checking the individual parameter settings. Some copy procedures are blocked automatically. You can only transfer a plugged-in device to a device with the corresponding configurations.

## 5. QUICKCOPY PC SOFTWARE

### 5.3. Parameter settings

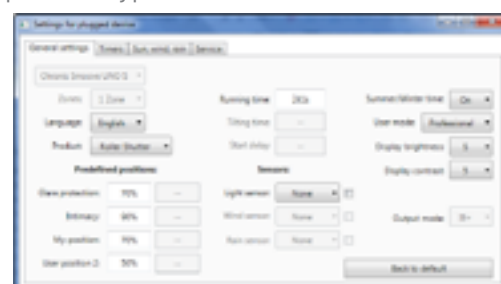
In the PC software, you can match the settings from a plugged-in device to a storage location or to PC-assigned data.

#### Opening Settings menu

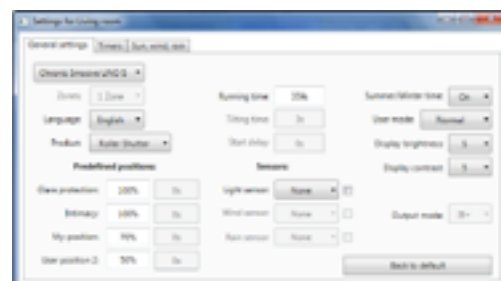
- Left click the mouse on the field of the device which is plugged in (e.g. Chronis Smoove Uno S).
  - A settings window appears.
- With the settings of the plugged-in Smoove device, the name of the Chronis / Soliris Smoove or Smoove UNO io device appears in upper left area. You cannot change the type of product as it is specific to the device.
- With storage spaces and PC data you can change the product type.



Example: Non changeable type of device.



Example: Changeable type of device.



#### Parameter settings

Depending on the Smoove device, different parameter settings appear. These are the same parameters that are set directly on the Smoove device (except with Chronis Smoove IB+ and Soliris Smoove IB+; here there are additional possibilities, as opposed to the device settings (see chapter "[Defining zones with IB+ versions](#)").

**Note:** For a detailed explanation of the function and parameter of the Smoove device, refer to the operating instructions of the corresponding device.

- Left click the mouse on a parameter to set it.
  - A support window appears automatically with the parameters and functions explanations ("Tooltip").

**Note:** As soon as a parameter is set, it is immediately saved and can no longer be set back. For this reason, save the original setting in a free storage location, or copy it in a PC file and then proceed with changing.

## 5. QUICKCOPY PC SOFTWARE

### Defining zones with IB+ versions

This setting can be done only with the QuickCopy PC Software.

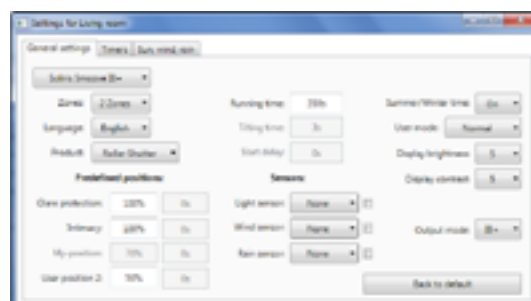
With Chronis Smooove IB+ and Soliris Smooove IB+, it is possible to define up to 3 different zones. Each zone for the timer function is settable individually. You can also decide for each zone whether to activate the Sun, Wind, or Rain Function. For example: the living room and the bedroom should both have different cycle times. For this, the IB+ device requires 2 zones.

#### Note:

- In the QuickCopy PC Software, the number of zones is defined and the corresponding parameters are set. Following this procedure, the Smooove devices are not yet assigned to the corresponding zones. There is a further procedure to assign zones. As soon as the Soliris Smooove IB+ or Chronis Smooove IB+ is plugged into the wall adaptor again and the Smooove devices are connected, this procedure can be carried out. Refer to the operating instructions of Soliris Smooove IB+ and Chronis Smooove IB+.
- The different zones are not designed to control different types of end products (Venetian blinds, roller shutters, awnings). If you want to do this, you must use different Chronis Smooove IB+ or Soliris Smooove IB+ devices. You can also apply another product, e.g. Somfy animeo IB+ Touch-Buco. With this option, you can even build 4 to 8 zones per central controlling.

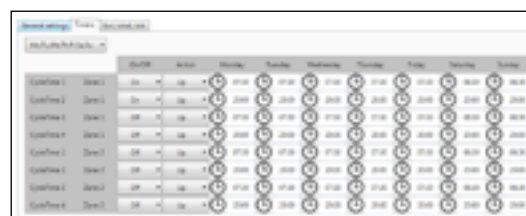
### Defining the number of zones

1. Open the settings window of a Smooove IB+ device.
2. Under "Zones", select the number of zones (example: Soliris Smooove IB+ with 2 zones).



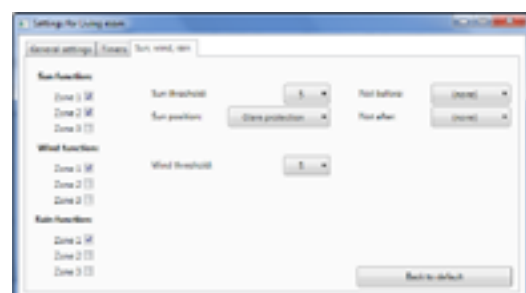
### Setting a zone individually

Under "Prog. timer", you can set each zone individually. Instead of 4 cycle times, you now have 8 (2-zone operation) or 12 (3-zone operation).



Under "Sun, Wind, Rain", you can decide which zone should carry out which function.

Example: Zone 1 and 2 are both assigned with the Sun Function. The Wind and Rain Functions are only assigned to zone 1.





## 6. TECHNICAL DATA

---

|   |   |
|---|---|
| Dimensions (HxWxD)                                    | 140x70x25   |
| Batteries   | 2xAA  |
| Expectancy of battery with a battery size of 1250 mAh | 270 days in stand-by mode<br>max. 18 hours in uninterrupted operation |



Somfy hereby declares that the radio equipment covered by these instructions is in compliance with the requirements of Radio Directive 2014/53/EU and the other essential requirements of the applicable European Directives.

The full text of the EU declaration of conformity is available at [www.somfy.com/ce](http://www.somfy.com/ce).

**Somfy SAS**

50 avenue du Nouveau Monde  
F-74300 CLUSES  
FRANCE

**[www.somfy.com](http://www.somfy.com)**

Somfy SAS, capital 20.000.000 Euros, RCS Annecy 303.970.230 - 11/2016

**somfy®**